



Earth Labs, LLC
15375 Barranca Pkwy Suite F101
Irvine, CA 92618

(888) 835-2276
http://www.earthlabs.net
Lic# C8-0000037-LIC

earthlabs
CBD TINCTURE

Sample ID: 2009ELA1745.4511
Strain: CBD TINCTURE
Matrix: Ingestible
Type: Tincture
Sample Size: ; Batch:

Manufactured: N/A
Collected: 09/09/2020
Received: 09/09/2020
Completed: 10/02/2020
Batch#:

Client
Real Tested CBD
Lic. #
1 Pelican Point
Newport Coast, CA 92657



Summary

Test	Date Tested	Result
Batch		Pass
Cannabinoids	10/01/2020	Complete
Moisture	10/02/2020	NR - Complete
Residual Solvents	09/14/2020	Pass
Pesticides	09/14/2020	Pass

Cannabinoids

Complete

1.7927 mg/serving	53.8358 mg/serving	58.3111 mg/serving
Total THC	Total CBD	Total Cannabinoids

Analyte	LOD	LOQ	Result	Result	Result	Result
	mg/g	mg/g	%	mg/g	mg/serving	mg/package
THCa	0.008000	0.197000	<LOQ	<LOQ	<LOQ	<LOQ
Δ9-THC	0.015000	0.197000	0.1936	1.936	1.7927	215.1283
Δ8-THC	0.011000	0.197000	ND	ND	ND	ND
THCV	0.018000	0.197000	ND	ND	ND	ND
CBDa	0.009000	0.197000	ND	ND	ND	ND
CBD	0.022000	0.197000	5.8138	58.138	53.8358	6460.2946
CBDV	0.015000	0.197000	<LOQ	<LOQ	<LOQ	<LOQ
CBN	0.008000	0.197000	ND	ND	ND	ND
CBGa	0.015000	0.197000	ND	ND	ND	ND
CBG	0.015000	0.197000	0.0828	0.828	0.7667	92.0074
CBC	0.011000	0.197000	0.2069	2.069	1.9159	229.9073
Total THC			0.1936	1.936	1.7927	215.1283
Total CBD			5.8138	58.138	53.8358	6460.2946
Total			6.2971	62.971	58.3111	6997.3375

1 Unit = 1 mL Tincture, 0.926g, 1 mL = 0.926g, 1 unit(s) per serving, 120 serving(s) per package.
Cannabinoids analysis by SOP LAB-001 utilizing High Performance Liquid Chromatography-Diode Array Detection (HPLC-DAD). Total THC = THCa * 0.877 + d9-THC; Total CBD = CBDa * 0.877 + CBD. LOQ = Limit of Quantitation. LOD = Limit of Detection. ND = Not Detected. If moisture content is tested and reported, the cannabinoid results are reported normalized to dry weight.



Melinda Tu

Melinda Tu
Manager
10/02/2020

Confident Cannabis
All Rights Reserved
support@confidentcannabis.com
(866) 506-5866
www.confidentcannabis.com



Sample collection for laboratory testing was performed in accordance with BCC's regulations, 16 CCR section 5705, effective 01/2019. Foreign material analysis by SOP LAB-008 utilizing visual examination and optical microscopy. Water activity measurement by SOP LAB-010 utilizing chilled-mirror dew point analysis. Moisture content measurement by SOP LAB-009 utilizing thermogravimetric analysis. This product has been tested by Earth Labs, LLC using valid testing methodologies and quality system as required by state law. All LQC samples were performed and met the acceptance criteria, pursuant to 16 CCR section 5730. Values reported relate only to the product tested. Earth Labs, LLC makes no claims as to the efficacy, safety or other risks associated with any detected or non-detected levels of any compounds reported herein. This Certificate shall not be reproduced except in full, without the written approval of Earth Labs, LLC.



CBD TINCTURE

Sample ID: 2009ELA1745.4511

Strain: CBD TINCTURE

Matrix: Ingestible

Type: Tincture

Sample Size: ; Batch:

Manufactured: N/A

Collected: 09/09/2020

Received: 09/09/2020

Completed: 10/02/2020

Batch#:

Client

Real Tested CBD

Lic. #

1 Pelican Point

Newport Coast, CA 92657

Residual Pesticides

Pass

Analyte	LOD	LOQ	Limit	Result	Status	Analyte	LOD	LOQ	Limit	Result	Status
	µg/g	µg/g	µg/g	µg/g			µg/g	µg/g	µg/g	µg/g	
Abamectin	0.022	0.066	0.3	ND	Pass	Fludioxonil	0.015	0.046	30	ND	Pass
Acephate	0.004	0.012	5	ND	Pass	Hexythiazox	0.007	0.021	2	ND	Pass
Acequinocyl	0.015	0.044	4	ND	Pass	Imazalil	0.029	0.086	0.029	ND	Pass
Acetamiprid	0.005	0.015	5	ND	Pass	Imidacloprid	0.008	0.024	3	ND	Pass
Aldicarb	0.025	0.074	0.025	ND	Pass	Kresoxim Methyl	0.025	0.074	1	ND	Pass
Azoxystrobin	0.009	0.028	40	ND	Pass	Malathion	0.028	0.084	5	ND	Pass
Bifenazate	0.005	0.014	5	ND	Pass	Metalaxyl	0.026	0.079	15	ND	Pass
Bifenthrin	0.022	0.066	0.5	ND	Pass	Methiocarb	0.031	0.093	0.031	ND	Pass
Boscalid	0.014	0.042	10	ND	Pass	Methomyl	0.031	0.093	0.1	ND	Pass
Captan	0.21	0.593	5	ND	Pass	Mevinphos	0.01	0.031	0.01	ND	Pass
Carbaryl	0.009	0.027	0.5	ND	Pass	Myclobutanil	0.017	0.052	9	ND	Pass
Carbofuran	0.018	0.054	0.018	ND	Pass	Naled	0.027	0.081	0.5	ND	Pass
Chlorantraniliprole	0.03	0.09	40	ND	Pass	Oxamyl	0.014	0.042	0.2	ND	Pass
Chlordane	0.023	0.075	0.023	ND	Pass	Pacllobutrazol	0.017	0.051	0.017	ND	Pass
Chlorfenapyr	0.007	0.022	0.007	ND	Pass	Parathion Methyl	0.011	0.033	0.011	ND	Pass
Chlorpyrifos	0.018	0.054	0.018	ND	Pass	Pentachloronitrobenzene	0.025	0.079	0.2	ND	Pass
Clofentezine	0.025	0.075	0.5	ND	Pass	Permethrin	0.087	0.26	20	ND	Pass
Coumaphos	0.02	0.06	0.02	ND	Pass	Phosmet	0.02	0.06	0.2	ND	Pass
Cyfluthrin	0.158	0.475	1	ND	Pass	Piperonyl Butoxide	0.021	0.063	8	ND	Pass
Cypermethrin	0.037	0.111	1	ND	Pass	Prallethrin	0.026	0.078	0.4	ND	Pass
Daminozide	0.01	0.03	0.01	ND	Pass	Propiconazole	0.029	0.088	20	ND	Pass
Diazinon	0.008	0.024	0.2	ND	Pass	Propoxur	0.03	0.089	0.03	ND	Pass
Dichlorvos	0.015	0.044	0.015	ND	Pass	Pyrethrins	0.02	0.059	1	ND	Pass
Dimethoate	0.027	0.082	0.027	ND	Pass	Pyridaben	0.006	0.018	3	ND	Pass
Dimethomorph	0.016	0.048	20	ND	Pass	Spinetoram	0.019	0.056	3	ND	Pass
Ethoprophos	0.018	0.055	0.018	ND	Pass	Spinosad	0.011	0.034	3	ND	Pass
Etofenprox	0.013	0.038	0.013	ND	Pass	Spiromesifen	0.019	0.057	12	ND	Pass
Etoxazole	0.029	0.088	1.5	ND	Pass	Spirotetramat	0.031	0.094	13	ND	Pass
Fenhexamid	0.019	0.058	10	ND	Pass	Spiroxamine	0.02	0.061	0.02	ND	Pass
Fenoxycarb	0.031	0.092	0.031	ND	Pass	Tebuconazole	0.008	0.025	2	ND	Pass
Fenpyroximate	0.01	0.03	2	ND	Pass	Thiacloprid	0.016	0.048	0.016	ND	Pass
Fipronil	0.016	0.047	0.016	ND	Pass	Thiamethoxam	0.005	0.015	4.5	ND	Pass
Fonicamid	0.001	0.004	2	ND	Pass	Trifloxystrobin	0.005	0.014	30	ND	Pass

Date Tested: 09/14/2020

Pesticides analysis by SOP LAB-005 using Gas Chromatography - Mass Spectrometry - Mass Spectrometry (GC-MS/MS) and by SOP LAB-004 utilizing Liquid Chromatography - Mass Spectrometry - Mass Spectrometry (LC-MS/MS). LOQ = Limit of Quantitation. LOD = Limit of Detection. ND = Not Detected.



Melinda Tu

Melinda Tu
Manager
10/02/2020

Confident Cannabis
All Rights Reserved
support@confidentcannabis.com
(866) 506-5866
www.confidentcannabis.com



Sample collection for laboratory testing was performed in accordance with BCC's regulations, 16 CCR section 5705, effective 01/2019. Foreign material analysis by SOP LAB-008 utilizing visual examination and optical microscopy. Water activity measurement by SOP LAB-010 utilizing chilled-mirror dew point analysis. Moisture content measurement by SOP LAB-009 utilizing thermogravimetric analysis. This product has been tested by Earth Labs, LLC using valid testing methodologies and quality system as required by state law. All LQC samples were performed and met the acceptance criteria, pursuant to 16 CCR section 5730. Values reported relate only to the product tested. Earth Labs, LLC makes no claims as to the efficacy, safety or other risks associated with any detected or non-detected levels of any compounds reported herein. This Certificate shall not be reproduced except in full, without the written approval of Earth Labs, LLC.



earthlabs

CBD TINCTURE

Sample ID: 2009ELA1745.4511	Manufactured: N/A	Client
Strain: CBD TINCTURE	Collected: 09/09/2020	Real Tested CBD
Matrix: Ingestible	Received: 09/09/2020	Lic. #
Type: Tincture	Completed: 10/02/2020	1 Pelican Point
Sample Size: ; Batch:	Batch#:	Newport Coast, CA 92657

Residual Solvents

Analyte	LOD	LOQ	Limit	Result	Status
1,2-Dichloroethane	0.20	0.85	1	ND	Pass
Acetone	8.72	187.97	5000	ND	Pass
Acetonitrile	9.00	187.97	410	ND	Pass
Benzene	0.17	0.85	1	ND	Pass
Butane	8.88	375.94	5000	ND	Pass
Chloroform	0.16	0.85	1	ND	Pass
Ethanol	67.00	751.88	5000	ND	Pass
Ethyl acetate	9.63	187.97	5000	ND	Pass
Ethyl ether	9.82	187.97	5000	ND	Pass
Ethylene oxide	0.07	0.85	1	ND	Pass
Heptane	18.33	187.97	5000	ND	Pass
Isopropyl alcohol	15.28	187.97	5000	ND	Pass
Methanol	29.85	187.97	3000	ND	Pass
Methylene chloride	0.18	0.85	1	ND	Pass
Hexane	30.25	187.97	290	ND	Pass
Pentane	18.61	187.97	5000	ND	Pass
Propane	21.78	375.94	5000	ND	Pass
Toluene	9.64	187.97	890	ND	Pass
Trichloroethylene	0.15	0.85	1	ND	Pass
Total xylenes (ortho-, meta-, para-)	11.59	187.97	2170	ND	Pass



Date Tested: 09/14/2020
Residual Solvents analysis by SOP LAB-003 utilizing Gas Chromatography – Flame Ionization Detection (GC-FID) and Gas Chromatography – Mass Spectrometry (GC-MS).
LOQ = Limit of Quantitation. LOD = Limit of Detection. ND = Not Detected.



Melinda Tu

Melinda Tu
Manager
10/02/2020

Confident Cannabis
All Rights Reserved
support@confidentcannabis.com
(866) 506-5866
www.confidentcannabis.com



Sample collection for laboratory testing was performed in accordance with BCC's regulations, 16 CCR section 5705, effective 01/2019. Foreign material analysis by SOP LAB-008 utilizing visual examination and optical microscopy. Water activity measurement by SOP LAB-010 utilizing chilled-mirror dew point analysis. Moisture content measurement by SOP LAB-009 utilizing thermogravimetric analysis. This product has been tested by Earth Labs, LLC using valid testing methodologies and quality system as required by state law. All LQC samples were performed and met the acceptance criteria, pursuant to 16 CCR section 5730. Values reported relate only to the product tested. Earth Labs, LLC makes no claims as to the efficacy, safety or other risks associated with any detected or non-detected levels of any compounds reported herein. This Certificate shall not be reproduced except in full, without the written approval of Earth Labs, LLC.



Earth Labs, LLC
15375 Barranca Pkwy Suite F101
Irvine, CA 92618

(888) 835-2276
http://www.earthlabs.net
Lic# C8-0000037-LIC

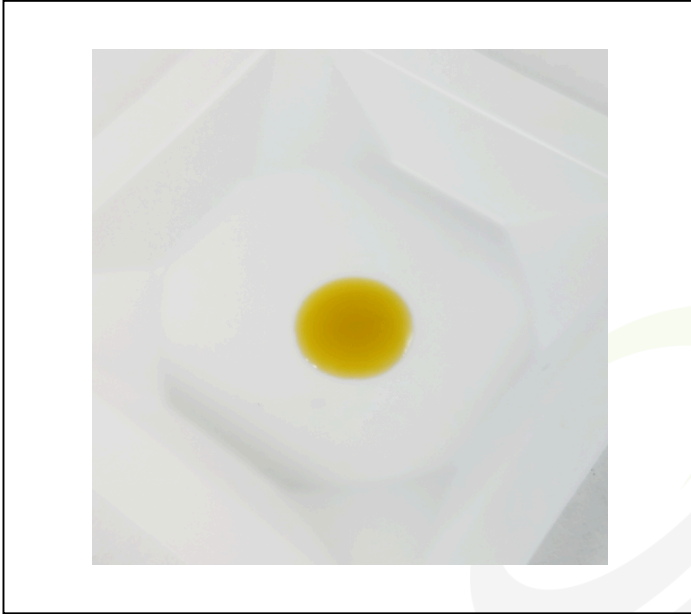
earthlabs

CBD TINCTURE

Sample ID: 2009ELA1745.4511
Strain: CBD TINCTURE
Matrix: Ingestible
Type: Tincture
Sample Size: ; Batch:

Manufactured: N/A
Collected: 09/09/2020
Received: 09/09/2020
Completed: 10/02/2020
Batch#:

Client
Real Tested CBD
Lic. #
1 Pelican Point
Newport Coast, CA 92657



Melinda Tu
Melinda Tu
Manager
10/02/2020

Confident Cannabis
All Rights Reserved
support@confidentcannabis.com
(866) 506-5866
www.confidentcannabis.com



Sample collection for laboratory testing was performed in accordance with BCC's regulations, 16 CCR section 5705, effective 01/2019. Foreign material analysis by SOP LAB-008 utilizing visual examination and optical microscopy. Water activity measurement by SOP LAB-010 utilizing chilled-mirror dew point analysis. Moisture content measurement by SOP LAB-009 utilizing thermogravimetric analysis. This product has been tested by Earth Labs, LLC using valid testing methodologies and quality system as required by state law. All LQC samples were performed and met the acceptance criteria, pursuant to 16 CCR section 5730. Values reported relate only to the product tested. Earth Labs, LLC makes no claims as to the efficacy, safety or other risks associated with any detected or non-detected levels of any compounds reported herein. This Certificate shall not be reproduced except in full, without the written approval of Earth Labs, LLC.